





## MAIN FEATURES

- Flexibility and strength
- Heat and weather protection
- High UV resistance
- Permanent translucence
- Wide range of colours

## APPLICATIONS

- Facade blinds, awnings
- Canopies
- Shade sails
- Light structures



Colours range meets current architectural trends

## Colour for creativity

- A palette of 40 colours including metallic finishes and interferential colours.
- 5 colour collections to give personality to the most varied designs.
- A unique range coordinated with other Serge Ferrari products to harmonise blinds, facades and other textile coverings.



Protects from external attack, maintains natural light supply

## High-performance thermal protection

The wide range of colours enables selection to each specific location and:

- contributes to optimized user comfort,
- enhances the aesthetic aspirations of each project.



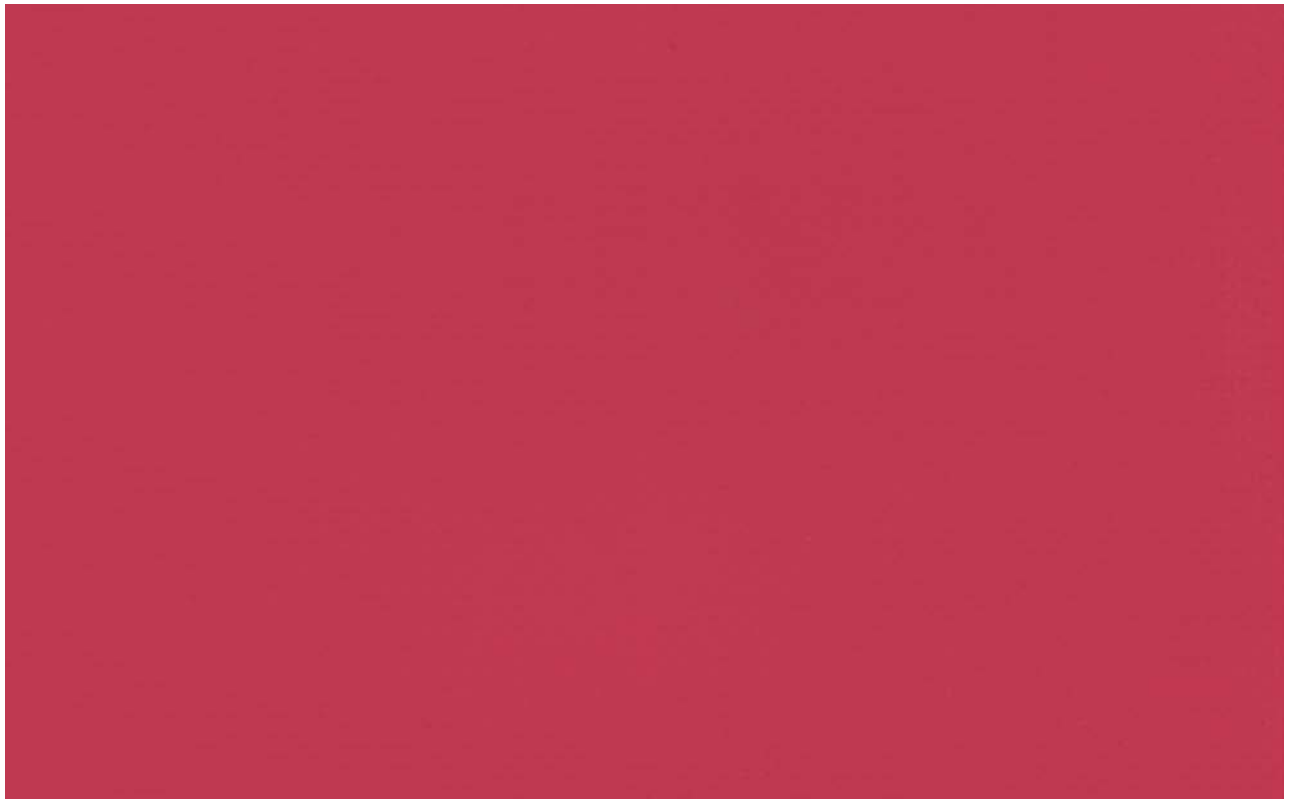
Durability and reliability guaranteed by Précontraint Serge Ferrari® technology

## Proven robustness

- Flexibility and strength providing total freedom of shape and size.
- High UV resistance due to rigorous pigment selection.
- Easy upkeep ensured by a very smooth finish and an innovative surface treatment.

# PRECONTRAIN

502



**Raspberry**

502-2150

## Emerging colours

This is a strongly urban harmony integrating both neutral or discreet shades and more sophisticated hues that sparkle in light, delicately suggesting metal.



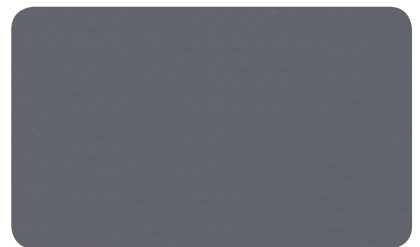
**White**

502-8102



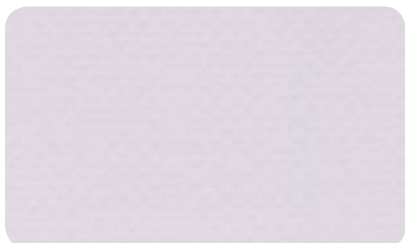
**Lagoon**

502-2160



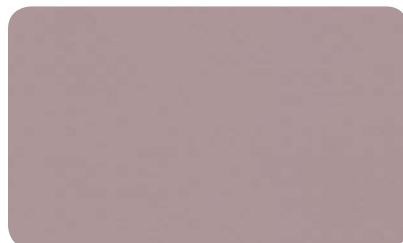
**Concrete**

502-2167



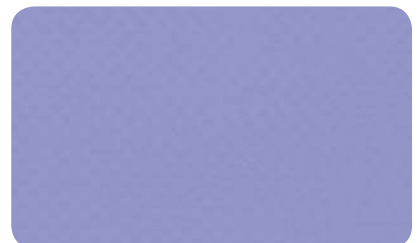
**Mastic**

502-2144



**Turtledove**

502-2163



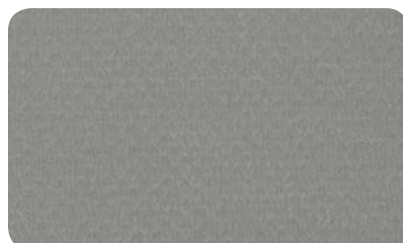
**Cornflower**

502-2159



**Shifting grey**

502-1499



**Aluminium**

502-2168

# Design illusion

Contemporary architecture ventures flashy, almost fluorescent colours, which assert themselves. This bright, saturated colour harmony clearly reflects a current trend, allowing every contrast.



**Spruce**

502-2156



**Tennis**

502-8056



**Aniseed**

502-2157



**Carrot**

502-2172



**Mandarin**

502-8204



**Buttercup**

502-2166



**Blackcurrant**

502-2165



**Raspberry**

502-2150

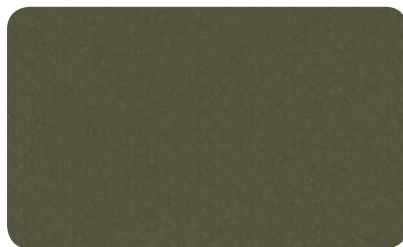
# Evolving with time

The colours appear to be taken directly from nature's palette; evoking an evolving plant world.



**Burgundy**

502-8284



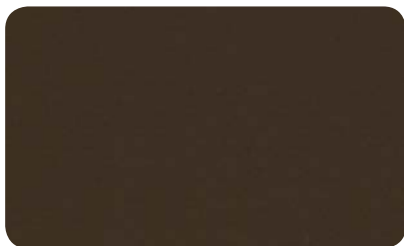
**Beetle**

502-2149



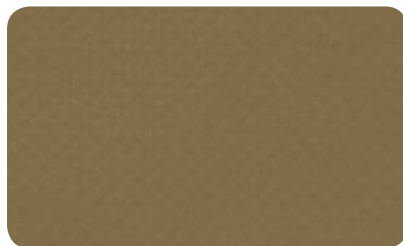
**Moss green**

502-2158



**Walnut stain**

502-2137



**Dead leaf**

502-2138



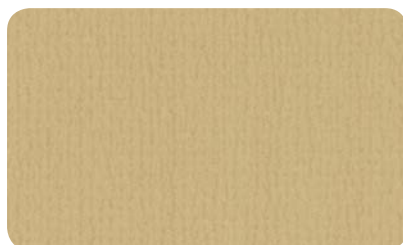
**Pepper**

502-2012



**Tuscan**

502-2173

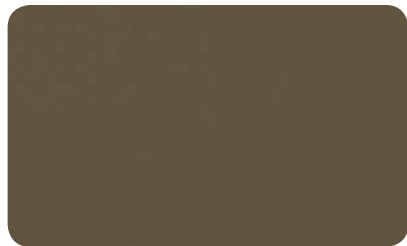


**Gold**

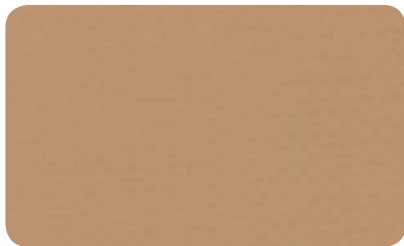
502-2145

# Body Language

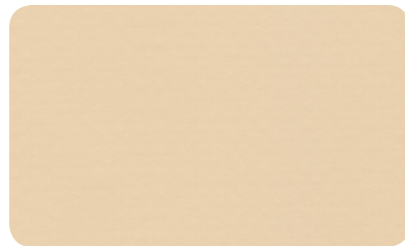
This powerfully carnal harmony is inspired by a variety of skin complexions. These colours are soft and velvety: they convey a certain neutrality by remaining sober and subtle.



**Cocoa** 502-2148



**Camel** 502-2141



**Vanilla** 502-8861



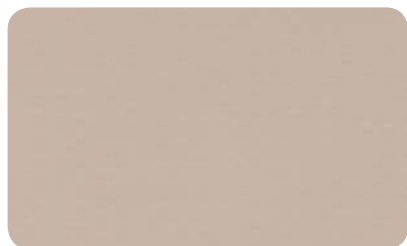
**Violet parma** 502-2164



**Pale pink** 502-2151



**Chick** 502-1013



**Sandy beige** 502-2135



**Champagne** 502-8341

# Mayhem

This darker harmony is inspired by a strange nocturnal world. The colours are ambiguous, some of them bring a dynamic to the whole.



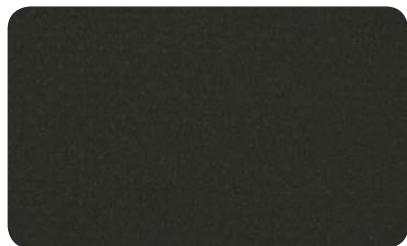
**Slate** 502-2162



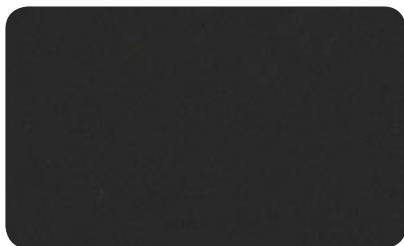
**Navy** 502-1125



**Midnight blue** 502-2161



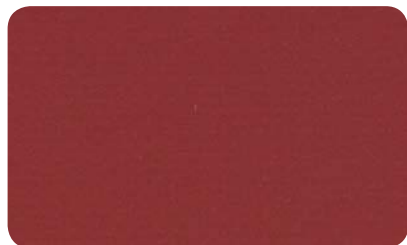
**Onyx** 502-2136



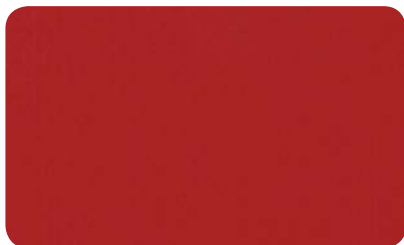
**Black** 502-8450



**Boulder** 502-2171



**Velvet red** 502-2152



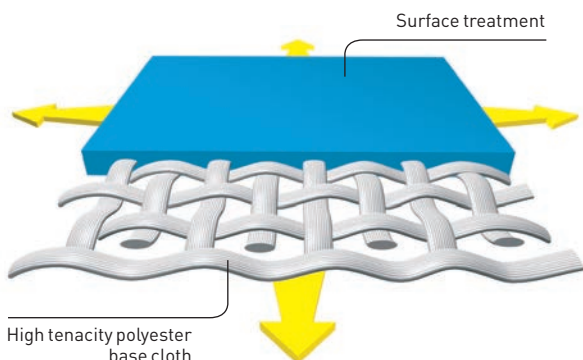
**Poppy** 502-8255

The colours and textures represented in this digital image are provided as a reference only. Whether seen on a screen or printed, they cannot in any way match the actual item. We recommend procuring an actual sample when specifying these products.

# Exclusive Précontraint Serge Ferrari® technology



Patented worldwide, Précontraint Serge Ferrari® technology involves keeping the composite under tension throughout the manufacturing cycle.



## Strength characteristics

- Exceptional dimensional stability
- Long-term strength
- Greater coating thickness at the top of the yarns
- Exceptional flatness

## Benefits

- **No deformation; won't sag**
- **Tear resistant**
- **Long-term aesthetics and strength**
- **Smooth finish, easy maintenance**

## Solar and light properties (EN 14501)

	Reference	TS	RS	AS		Reference	TS	RS	AS
	502-1013	10	61	29		502-2160	5	35	60
	502-1125	4	21	75		502-2161	6	28	66
	502-1499	4	48	48		502-2162	6	25	69
	502-2012	4	44	52		502-2163	5	48	47
	502-2135	7	58	35		502-2164	7	50	43
	502-2136	2	15	83		502-2165	15	29	56
	502-2137	6	22	72		502-2166	12	56	32
	502-2138	4	36	60		502-2167	2	29	69
	502-2141	8	52	40		502-2168	1	43	56
	502-2144	7	66	27		502-2171	4	48	48
	502-2145	7	57	36		502-2172	12	47	41
	502-2148	4	30	66		502-2173	12	42	46
	502-2149	3	24	73		502-8056	3	20	77
	502-2150	11	46	43		502-8102	10	76	14
	502-2151	8	60	32		502-8204	16	41	43
	502-2152	9	37	54		502-8255	20	37	43
	502-2156	4	15	81		502-8284	6	24	70
	502-2157	8	47	45		502-8341	10	68	22
	502-2158	4	34	62		502-8450	2	19	79
	502-2159	5	46	49		502-8861	7	61	32

TS : Solar Transmission [%]  
 RS : Solar Reflection [%]  
 AS : Solar Absorption [%]  
 TS + RS + AS = 100% of incident energy

# Matching colours with **PRECONSTRAINT** 502 STRIPES



582-50056



582-50054



582-50057



582-50055



582-50051



582-50053



582-50052



582-50050



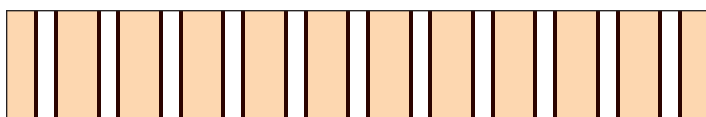
582-50048



582-50046



582-50049



582-50047

# PRECONTRAIN

## 502

Technical properties	Précontraint 502	Standards
Yarn	1100 dtex PES HT	
Weight	590 g/m <sup>2</sup>	EN ISO 2286-2
Width	180 cm	
Physical properties		
Tensile strength (warp/weft)	250/250 daN/ 5 cm	EN ISO 1421
Tear strength (warp/weft)	25/20 daN	DIN 53.363
Adhesion	9/9 daN/ 5 cm	EN ISO 2411
Surface treatment		
Finish	Varnish both sides	
Flame retardancy		
Rating	/NFP 92-507 • /DIN 4102-1 • BS 7837 • /AS/NZS • SP METHOD 2205 /UNE 23.727-90 • /SN 198898 • /ONORM A3800-1 /UNI 9177-87 • /NFPA 701 • CSFM T19 • /ASTM E84 /GOST 30244-94 • CAN ULCS109	
Euroclass	/ EN 13501-1	
Management system		
for Quality	ISO 9001	
Certifications, labels, guarantees, recycling capacity		



The above technical data represent average values subject to a +/-5% tolerance.

The buyer of our products is fully responsible for their application and their transformation with regard to any possible third party. The buyer of our products is responsible for their implementation and installation according to the standards, workmanship and safety regulations in force in destination countries. For information on our contractual warranty, please refer to the relevant terms and conditions.

The values quoted above represent results of tests performed in compliance with common design practices and are provided for information only to enable customers to make the best use of our products. Our products are subject to changes based on technical advances and we reserve the right to modify their characteristics at any time. The buyer of our products is responsible for checking the validity of the above data.

## TOOLS AND SERVICES

- Maintenance manual and Life Cycle Assessment (LCA) available on request

### > Contact us

- Tel. +33 (0)4 74 97 41 33
- Contact and project forms available at: [www.sergeferrari.com](http://www.sergeferrari.com)

### > Specification department

- Contact your Serge Ferrari representative
- To detail your project, fill in a form under: [www.sergeferrari.com](http://www.sergeferrari.com)

### > Taxyloop

- An operational recycling chain
- [www.taxyloop.com](http://www.taxyloop.com)